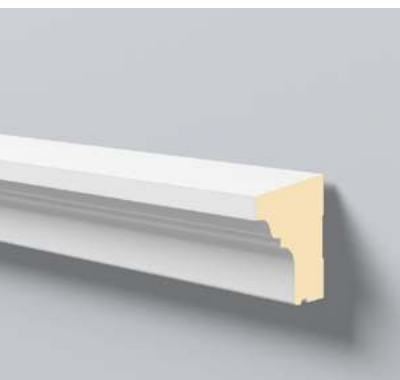


# DOMOSTYL®

## Facade Mouldings

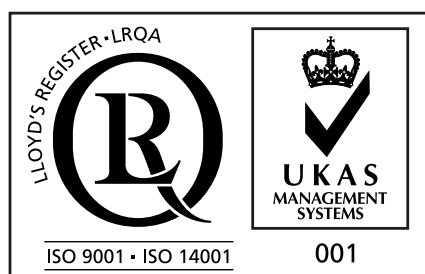


DOMOSTYL®



### 1. MATERIAL

Material constituents	High-density polyurethane foam 100% without CFCs
Density	200 Kg/m <sup>3</sup> - 220 Kg/m <sup>3</sup>
Fire classification	B2 according to norm DIN 4102 -1 Euroclass E according to norm EN ISO 13501-1
Installation temperatures	+5°C / +25°C - See specifications of the adhesives used.
Temperatures for use	-20°C / +70°C
Flexural resistance: Rupture strength Rupture deflection	According to ISO/DIS 1209 norm 2,41 N/mm <sup>2</sup> 15,9 mm
Traction resistance: Resistance under a 100 kg load	According to the CSTB method (France) Delta E 0,07 mm
Cutting test	According to CSTB method (France) Dry state 0,60 MPa Wet state 0,29 MPa (break between adhesive and concrete)
Bonding of the synthetic coating on the PU after ageing	0,62 MPa
Surface hardness (Shore D)	35 according to norm DIN 53505/ISO 868



NMC sa reserves the right to update the product line or its technical features to the state-of-the-art technology anytime and without previous announcement. All given information is to the best of our knowledge. If you have any questions concerning technical details please contact the NMC sa information service. Any partial reproduction or reprint shall require our explicit approval.

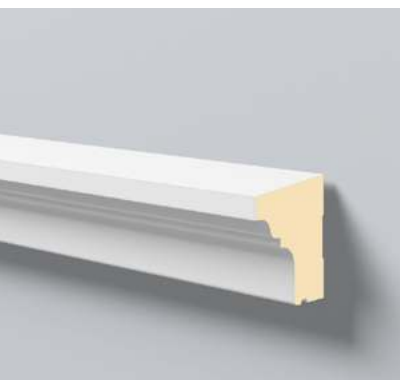
**NMC sa**  
Gert-Noël-Strasse – B-4731 Eynatten  
☎ +32 87 85 85 00 – 📠 +32 87 85 85 11  
info@nmc.eu

*we will succeed together*



# DOMOSTYL®

## Facade Mouldings



**DOMOSTYL®**

### 2. SPECIFIC PROPERTIES

#### Factory finish:

Non-flammable grey (RAL 9020) acrylic primer containing synthetic microspheres ensuring a structured surface and good adhesion.

#### Exposed surfaces:

A reinforcing sheet is applied during moulding procedure and guarantees a hard and smooth surface. This sheet is covered with an acrylic primer containing grain silica designed to ensure better adhesion of the final paint.

#### Gluing surfaces:

Milled surface for better adhesion of the glue.

#### Dimensions:

Length: 2 m

The height and depth of each moulding are indicated in the catalogue. The measurements are rounded up to the next 5mm.

### 3. USE

#### Storage and installation conditions:

Flat, sheltered from the sun and from humidity. Storage temperature +10°C / +25°C, rel. Humidity 45% to 65%. Must be handled carefully. Suitable for external use, solely for decoration. From laying to adhesive drying (24h), temperature could not be under +5°C. When exposed to the sun and at temperatures above + 25 ° C, the profiles must be laid with care (in the shade).

The installation instructions must be followed.

#### Laying surface:

Surfaces should be dry, grease- and dustfree. Remove any residue of glue, bitumen or silicone.

#### Adhesivs:

DOMOSTYL® HYBRIDE : MS polymer based permanently elastic neutral mastic adhesive

#### Finishes:

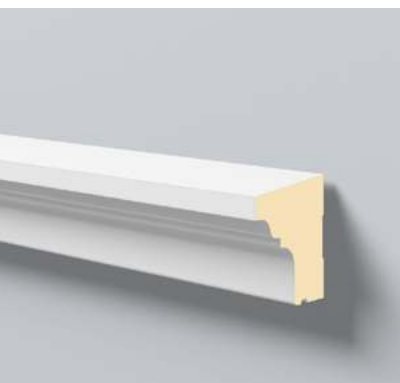
Lime paints, silicate paints, silicone resin paints and their mixed products must not be used.

For visual reasons, we recommend that the first coat be applied with a brush or a filled facade paint.

Finish the finish with fungicide-adjusted facade paint.

# DOMOSTYL®

## Facade Mouldings



DOMOSTYL®

### 4. SPECIAL INSTRUCTIONS

Regulations concerning dangerous substances:  
See Safety Data Sheet.

**Important note:**

The elements are strictly decorative, for external use and do not fulfil any structural function. Therefore they are not designed to bear loads or movement

Physical properties of the products and the laying surfaces cause different natural expansion coefficients, and induce that the joint and the glue move or that (fine) hair cracks can be seen. This fact does not constitute grounds for complaint.